

DAVID'S BRIDAL™

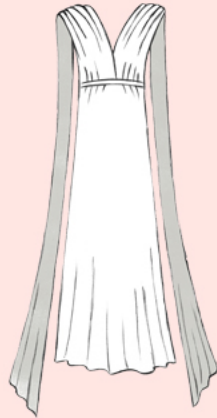
Jersey Convertible Dresses

How to Style: Twisted Cap Sleeves



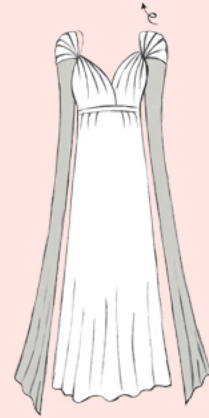
Step 1

Drape the ties over the shoulders.



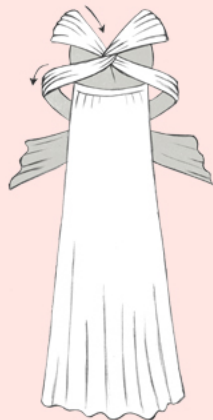
Step 2

Starting above the bust, twist the ties inward twice, then fan out the fabric to cover the shoulders.



Step 3

Crisscross the ties mid-back, then wrap them around the waist.



Step 4

Cross the ties in the front and knot together in the back.

